



Quick Guide

1. Quick Start Guide. Introduction	3
2. Installing the Axxon Next Software Package	3
3. Licensing the Software package	4
4. Starting and closing the Axxon Next software	6
5. Configuring the Axxon Next software package	7
6. Operating the Axxon Next software package	11

Quick Start Guide. Introduction

On page:

- [Document purpose](#)
- [Purpose of the Axxon Next software package](#)

Document purpose

This document, titled [Quick Start Guide](#), is intended to be used as a concise guide for installing and starting the *Axxon Next* software package as well as for configuring and using its main functions (video surveillance, audio surveillance, pan/tilt/zoom devices management).

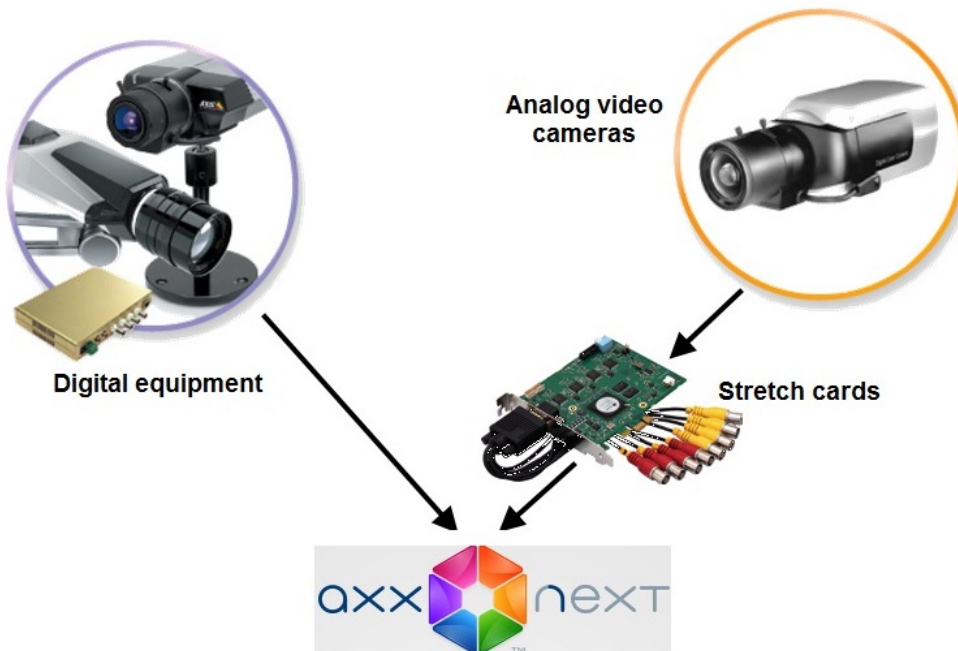
More detailed information on the *Axxon Next* software package is presented in the documents titled [User Guide](#) and [Recommended platforms](#).

Purpose of the Axxon Next software package

The *Axxon Next* software package is an entry-level product in the Axxon product line developed by AxxonSoft. Security systems based on *Axxon Next* range from home security systems (for an apartment or house) to professional security systems for small and midsize businesses (hotels, automotive service centers, shops, parking structures, etc.).

Video and audio surveillance of guarded locations, video analysis and rapid response to suspicious situations without operator involvement, and storage and export of obtained data are just a few of *Axxon Next*'s many functions.

The *Axxon Next* software package enables the user to accomplish a wide spectrum of tasks, as it works both with digital equipment and with analog video cameras (through Stretch cards), and also makes it possible to create a hybrid security system containing both kinds of equipment.



The *Axxon Next* software package supports touch-sensitive monitors.

Installing the Axxon Next Software Package

First of all, you have to install the hardware and software components of the *Axxon Next* software package.

Note

Refer to the document titled [Recommended Platforms](#) for obtaining detailed information on recommended Axxon Next hardware and software platform

When working with *Axxon Next*, the user must keep in mind the limitations that the developer imposed on the system in order to ensure its operability. The most important limitations are as follows:

1. Use only Latin characters, Arabic numerals and the minus sign (-) to name your computer with *Axxon Next* will be installed.
2. Never change the computer name after you have installed the system.
3. Synchronize the time among all the networked computers with *Axxon Next* installed.
4. Enable remote access to the computer with *Axxon Next* installed using NetBiosName.
5. TCP ports, dynamically specified by OS, are used while connecting the server-client.

To proceed with installation you must have Windows OS administrator rights.

The following two types of installations are available when installing *Axxon Next* to a personal computer:

1. **Server and Client**— This type of installation is used to accomplish the following tasks:
 - a. Physical connection to a personal computer and software configuration of video and audio capture devices (video cameras, microphones), event generation devices (sensors, relays, etc.), and hard disks for organizing data archives.
 - b. All tasks accomplished with the **Client** type of installation (see below).
2. **Client** – This type of installation is used for installing the software's user interfaces, which enable any user to connect to any server within a single security system and to perform administration/management/monitoring of a guarded location based on the permissions granted by the administrator.

To install the *Axxon Next* software package, perform the following steps:

1. Power up the PC and load the operating system.
2. Insert the *Axxon Next* installation CD into the CD-ROM drive.

Note

Compressed distributive of *Axxon Next* software package without .NET Framework 2.0 and .NET Framework 3.5 SP1 is available on AxxonSoft website. You have to install this software on your own before the *Axxon Next* installation.

1. Start the *Axxon Next* software installation.
2. Install the required configuration of *Axxon Next* (**Server and Client/ Client**) with specified Axxon-domain and path of *Axxon Next* and database, by following setup prompts.

Installation of *Axxon Next* is now finished.

Licensing the Software package

After installation the *Axxon Next* software package is started in demo mode. Worktime period is from 8 am to 6 pm. There are no other limitations which includes functional limitations on software in demo mode.

Activate the *Axxon Next* software package for full-function operation. To activate the software

package distribute the license file in the system.

Data on the types of *Axxon Next* licenses is presented below.

Type of license	Number of servers in the system	Number of video channels per server	Archives volume	Forensic search in archive	Cost
Demo mode (worktime period is from 8 am to 6 pm)	Unlimited	Unlimited	Unlimited (determined by the disk subsystem size)	Yes	Free
<i>Axxon Next Free Version</i>	1 (fixed)	16 (fixed)	1 terabyte	No	Free
<i>Axxon Next</i>	Unlimited	Unlimited	Unlimited (determined by the disk subsystem size)	Yes (if needed)	Contact an AxxonSoft representative for the price

 **Attention!**

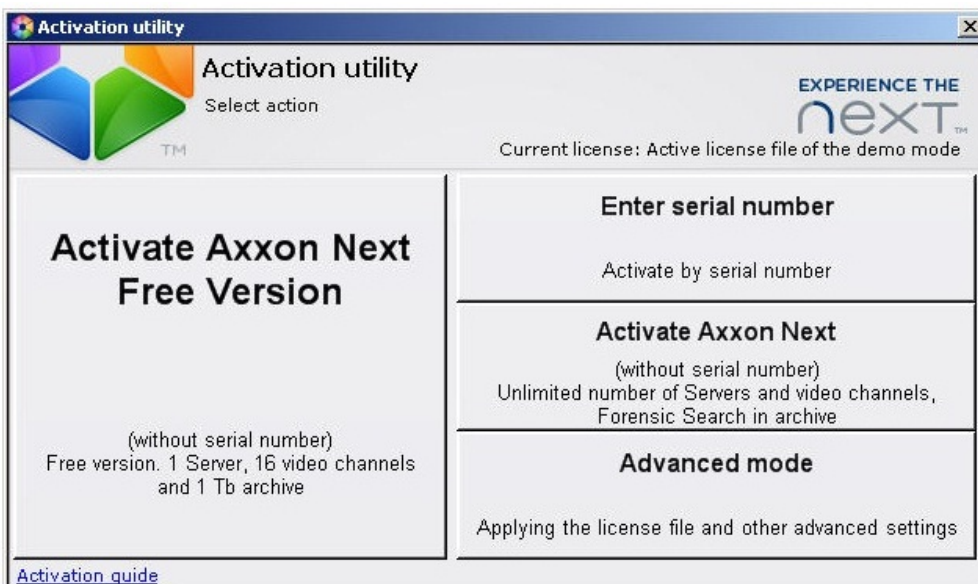
The license is lost if the main configuration of computer components (motherboard, CPU, HDD, video card, RAM, network card) was changed on Axxon Next Server

License activation for the *Axxon Next* software package is carried out through the corresponding utility. Launch the product activation utility using **Start** menu: **Start All programs Axxon Next Utilities Product activation**.

Next you should select the name of one of the servers in the Axxon-domain in which the license file is to be distributed (the file will be distributed on all servers of this Axxon-domain which are running at the moment of activation) and connect to the system using the name and password of the *Axxon Next* software package administrator to continue the activation process.



The main page of the product activation utility will then appears.



It is recommended that you read [Activation guide](#) providing step by step activation instructions.

Note

To read this manual click the link in the bottom-left corner on the main page of the product activation utility

Starting and closing the Axxon Next software

Check readiness for operation of the entire communication environment, cameras, microphones and other system components before starting the system.

To start working with the software, you must perform the following steps:

1. Go to **Start All Programs Axxon Next Axxon Next**.

Axxon Next's Client will then launch and an authorization window will appear.

2. Enter your user name and password and click **Connect**.

Note

If a remote user is accessing the software, the name of the computer with which the connection is being established should be indicated in the **Computer** field

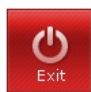

Note

When logging into the system for the first time, use the user name **root**, which has administrator permissions. Enter "root" into the **User name** and **Password** fields. The administrator then needs to configure the system for multi-user access.

If authorization is successful, a video surveillance monitor will be displayed on the screen.

Before closing *Axxon Next*, you need to exit the user interfaces. To do this, you need to do one of the following:



1. Click the  button located under **Settings**.
2. Select **Exit** in the context menu of the *Axxon Next* icon , which is located on the Windows toolbar when the program window is minimized.




When you perform one of these actions, the authorization window will appear. To close *Axxon Next* (completely exit the client), click **Close**.

Configuring the Axxon Next software package

On page:

- [Prior device configuration](#)
- [Procedure for Configuring System Objects](#)
- [Devices](#)
- [Detectors](#)
- [Archives](#)
- [Roles and Users](#)

The *Axxon Next* software package's interface consists of three expanding menus:

1. **Layouts** 
2. **Alerts** 
3. **Settings** 

Use the **Settings** menu to configure *Axxon Next*.

Prior device configuration

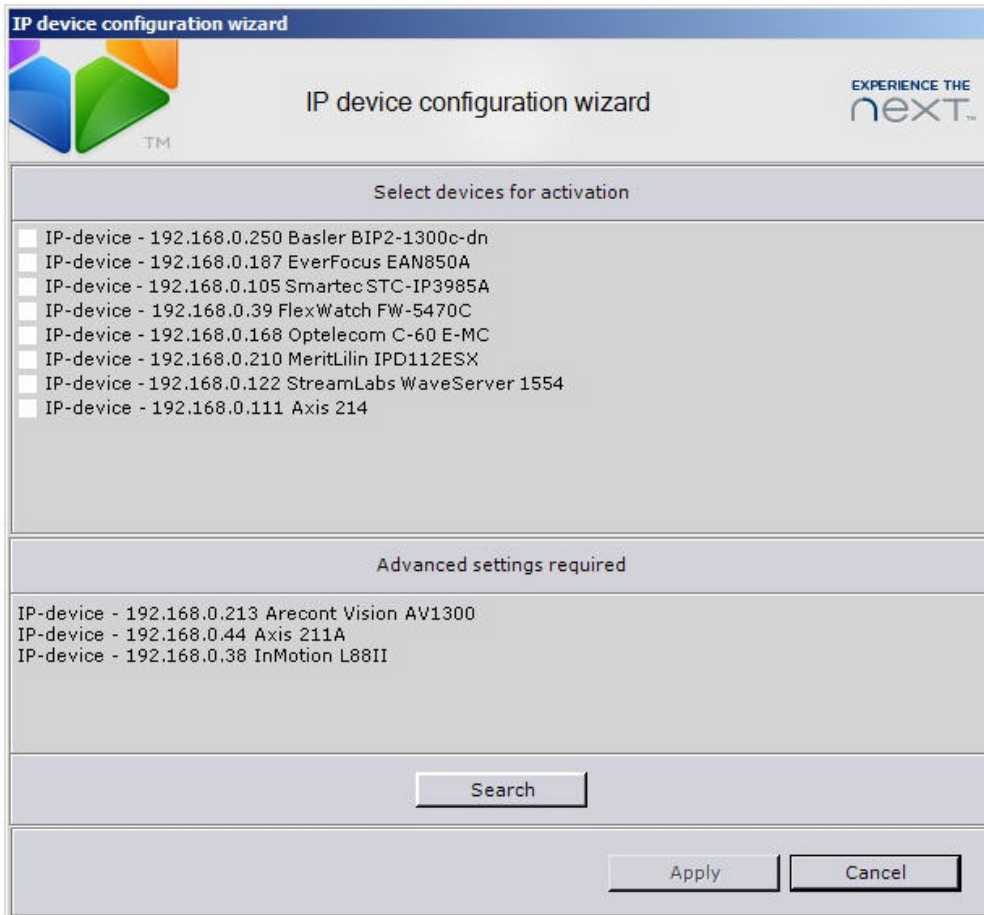
The following prior operations are to be performed at the first launch of *Axxon Next* software package:

1. select IP-devices for registration as Objects;
2. configure the archive on default for selected objects.

First of all, click **Yes** in the **IP device configuration wizard** dialog box (1)



As the result the IP device configuration wizard opens.



Launch of this configuration wizard is followed by auto search of connected IP devices. Found devices are displayed in **Select devices for activation** list.

Set checkboxes next to those devices that should be registered as *Axxon Next* software objects in **Select devices for activation** list. Click **Apply**.

Click **Search** to start the IP devices search again.

After clicking the **Apply** button the user will be suggested to configure archives on default for video cameras (IP devices) selected at the first step.

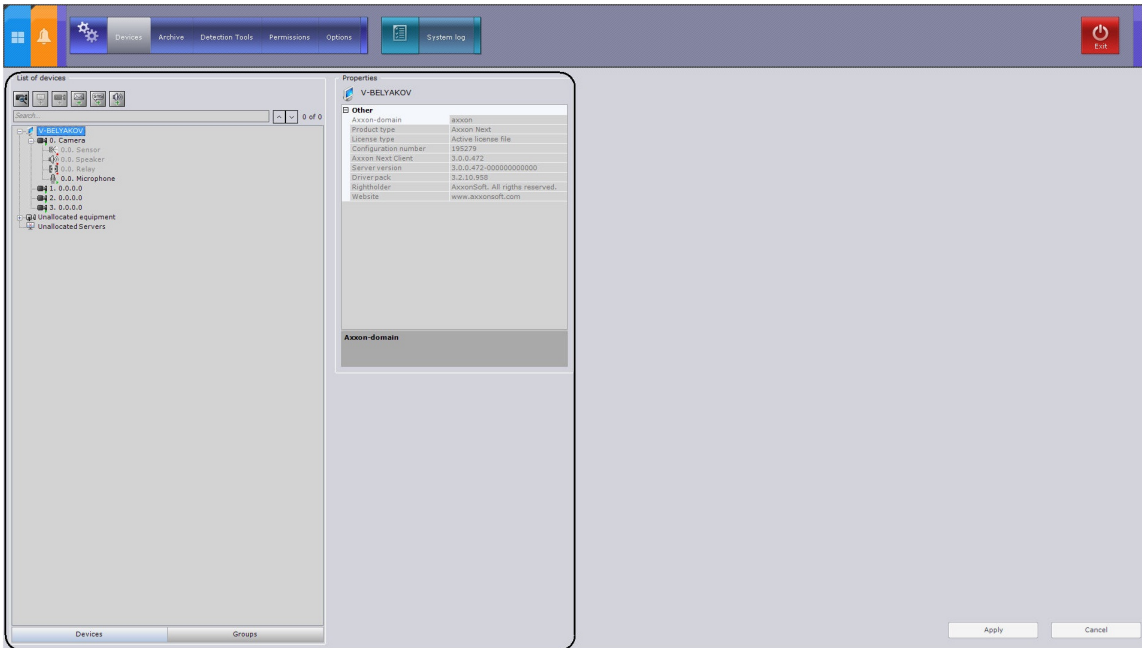
Archive files of specified size will be created on all selected disks when archives are created through the IP device configuration wizard. These files will be logically combined into one archive to which records from all video cameras configured through this wizard will be stored.

⚠ Attention!

It is not recommended to specify the File value of the Type section parameter when archives are created. Select the Logic disk value for this parameter. It is possible to do only through the Axxon Next software interface (see The Axxon Next Software Package. User Guide, Archive creation with required parameters chapter)

Procedure for Configuring System Objects

System objects form the basis for configuring the *Axxon Next* software package; you can set them up using the **Settings** menu.



Identifying and managing devices physically connected to a server, creating users with varying permissions, and creating rules and automatic responses are just a few of the things the user can do by creating and configuring system objects.

The procedure for working with system objects varies slightly depending on their type, but generally you should adhere to the following sequence of actions:


1. Create an object.
2. Configure its parameters.
3. Save changes.
4. Edit the values of parameters.
5. Save changes.

It is necessary to save changes if the object was deleted.

Some system object parameters have a set range of values. In this case you must select the appropriate value from a list. Other parameters serve to display information, while yet others must be set manually according to the recommendations in the parameter's description (as a rule, the parameter description is displayed in a special area under the object properties table when the parameter is selected).

As is evident from the sequence listed above, any changes made during configuration should be saved by clicking the **Apply** button. Changes will be applied without software restart after clicking the **Apply** button. Before you click the **Apply** button, the changes may be cleared using the **Cancel** button.


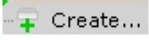
Devices

System objects corresponding to physically connected devices appear in the system as a result of the device search. To search for a device, use the  button on the **Device** tab.

Devices found are displayed with their IP addresses as an **Unallocated equipment** list.

The desired unallocated equipment must be linked to a server, after which it will be displayed in the list of devices on the server and will be accessible as **Camera** or **IP Server** for further configuration.

The object tree of **Camera** and **IP server** objects is generated automatically according to its functions which are integrated into the *Axxon Next* software package (the presence of alarm inputs, relay outputs, a pan/tilt unit, etc.).

You can also create objects in *Axxon Next* either using the  tools located above the object tree or using the  button, depending on the object type. You can then configure the objects and save changes.

Detectors

In the *Axxon Next* software package, several types of detectors process incoming data:

1. Situation analysis detectors.
2. Video detectors.
3. Audio detectors.
4. Detectors embedded in a video camera:
5. Detectors which process signals from the video camera's sensor.

Detector setup takes place using the interface in the **Detectors** tab (under **Settings**). In order for certain actions to be executed when a detector is triggered, you must configure automatic rules. The rules configuration is to be done in configurations of the corresponding detector.

Archives

You can configure archives using the interface in the **Archive** tab (under **Settings**). An archive can be distributed on several volumes of the server. On one volume for one archive you can create only one partition, which occupies either a file of a set size or the entire volume. You can configure archives as follows:

1. Create archives with the desired parameters.
2. Configure recording of the video stream from video cameras to the archive.

Roles and Users

In *Axxon Next*, only one role (Administrator) and one user (root) are registered by default; their deletion is prohibited. Administrators possess permissions to configure all components of the video surveillance system. To register an operator with individual permissions, you must create a new role with those permissions and a new user account for that user.

Registration and configuration of roles and users is carried out through the **Permissions** tab in **Settings**.

Operating the Axxon Next software package

On page:

- [Viewing tile](#)
- [Layouts](#)
- [The Archive Navigation Panel](#)
- [The archive search mode](#)
- [The PTZ Control Panel](#)

This guide briefly discusses the operation of the following main elements of the User Interface:

1. Viewing Tile.
2. Layouts.
3. Archive Navigation Panel.
4. The Archive search mode.
5. PTZ Control Panel.

You can access them using the **Layouts** menu.

Note

The viewing tile can be displayed on the Alerts menu to evaluate alert events occurred

Viewing tile

The viewing tile is used to display video stream on the computer monitor with specific parameters and to monitor the forensic search in archive. The viewing tile also has a function which allows the generation and evaluation of alert events in the process of video monitoring of a guarded location.



The viewing tile context menu is used to access the following functions (depending on the enabled surveillance mode: real time, archive or alert):

Note

To select the video surveillance mode, use the tabs in the lower right-hand part of the viewing tile

1. Video surveillance.
2. Audio monitoring.
3. Exporting frames and recordings.
4. Object tracking.
5. Displaying of sensor current state.
6. Relay management.

To bring up the viewing tile context menu, left-click the video camera icon in the upper left-hand corner of the tile.

Layouts

An *Axxon Next* operator is granted access to work with the layouts ribbon. The layouts ribbon can

operate in a user-defined mode or a standard mode of operation.



By default, the user mode is enabled for the layouts ribbon. The operating mode of the layouts ribbon can be specified in the **Settings Options User interface** tab.

The Archive Navigation Panel

The archive navigation panel is automatically displayed in the right-hand part of the screen when you switch the viewing tile to archive mode or forensic search in archive.

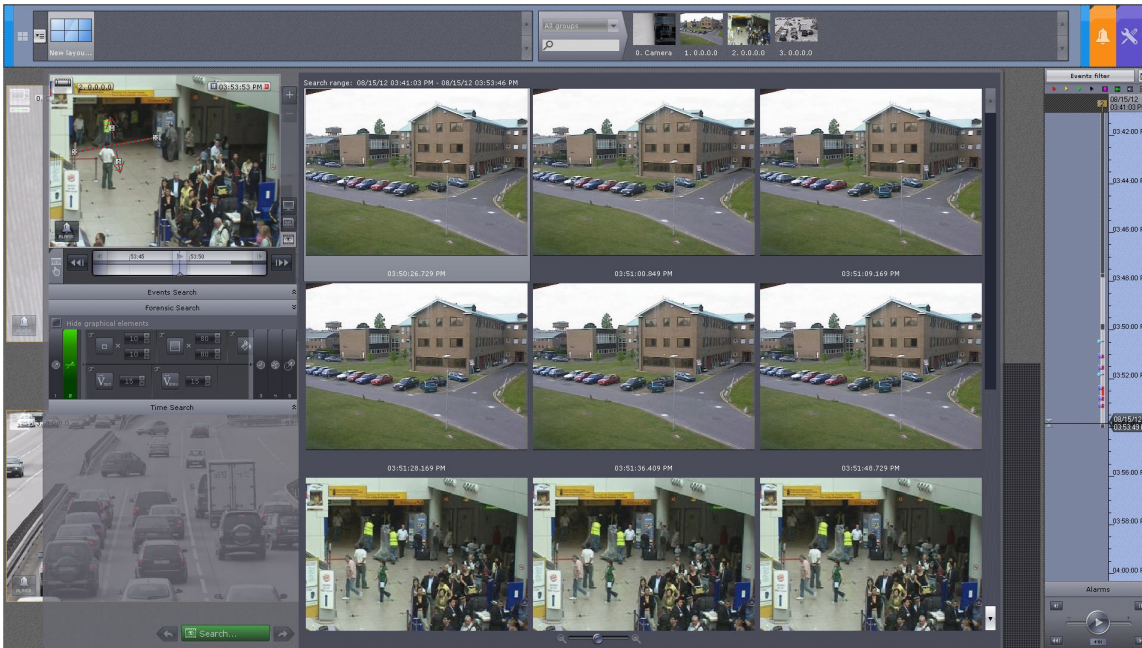


The archive navigation panel is used for the following functions:

1. Navigating in the archive.
2. Playback of recordings.
3. Selecting playback mode: forward or backward.
4. Setting playback speed.
5. Selecting alerts for display on the timeline and in the alert events list.
6. Viewing the list of the alert events of the selected type.

The archive search mode

The archive search mode is used to search the video fragments in the archive and to analyse them.



Three search types are available in the archive search mode:

1. Search by events.
2. Search by time.
3. Forensic search.

Forensic search allows to search the video fragments by following criteria:

1. moving in the area;
2. crossing the virtual line by object track;
3. long stay of object in the area;
4. a lot of objects stay in the area simultaneously;
5. moving from one area to another.

The PTZ Control Panel

The PTZ control panel is displayed automatically in the right-hand part of the screen when the viewing tile of a PTZ camera is activated in real time mode.



The PTZ control panel is used for the following functions:

1. Controlling PTZ video cameras.
2. Setting and switching to camera presets.
3. Launching/stopping patrolling.